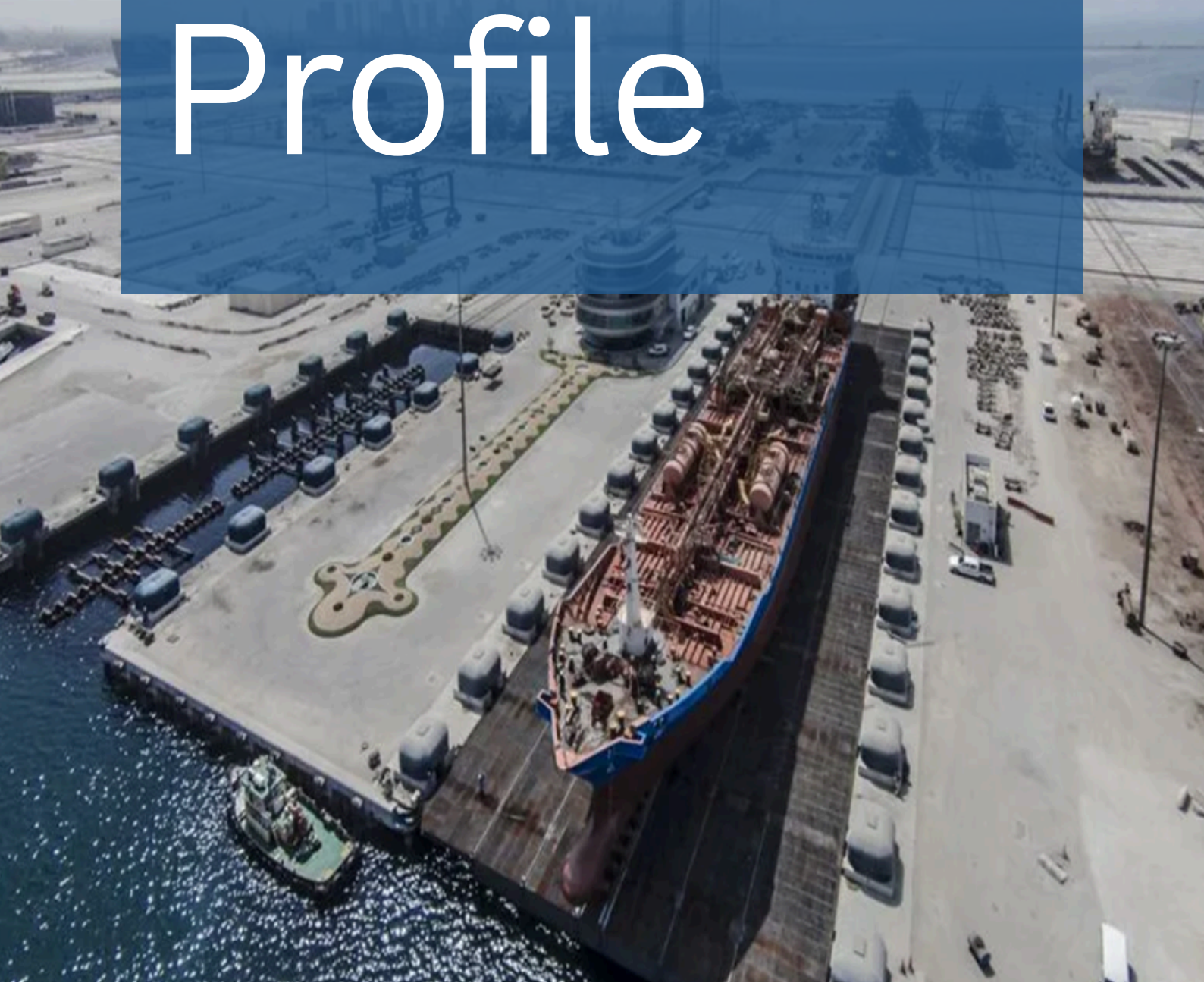


Corporate Profile



SHIPTECH
— DRYDOCKS —

www.shiptechdrydocks.com



INTRODUCTION

P2

SHIPYARD FACILITIES

P3-4

- Shipyard Facilities
- Dubai Maritime City Facilities
- The Infrastructure

SHIPYARD CAPABILITIES

- Ship Repair & Conversion
- Types of Services
- Aluminum Shipbuilding

P5

P6-14

P15

QUALITY ASSURANCE POLICY

P16

An aerial photograph of a large industrial shipyard at sunset. The sky is a gradient of orange and yellow, with the sun low on the horizon. In the foreground, several large ships are docked in drydock areas. The shipyard is filled with various structures, cranes, and equipment. The water is visible in the background.

INTRODUCTION

Established in the Middle East in 2010 under Triangle Shipyard commercial name, before merging into group of SHIPTECH DRYDOCKS that offers a diverse range of services to specialist industry sectors.

SHIPTECH DRYDOCKS operates through its segments which serve the Marine, Oil & Gas, and offshore industries.

SHIPTECH DRYDOCKS

Ship Repair & Ship Building located in Dubai Maritime

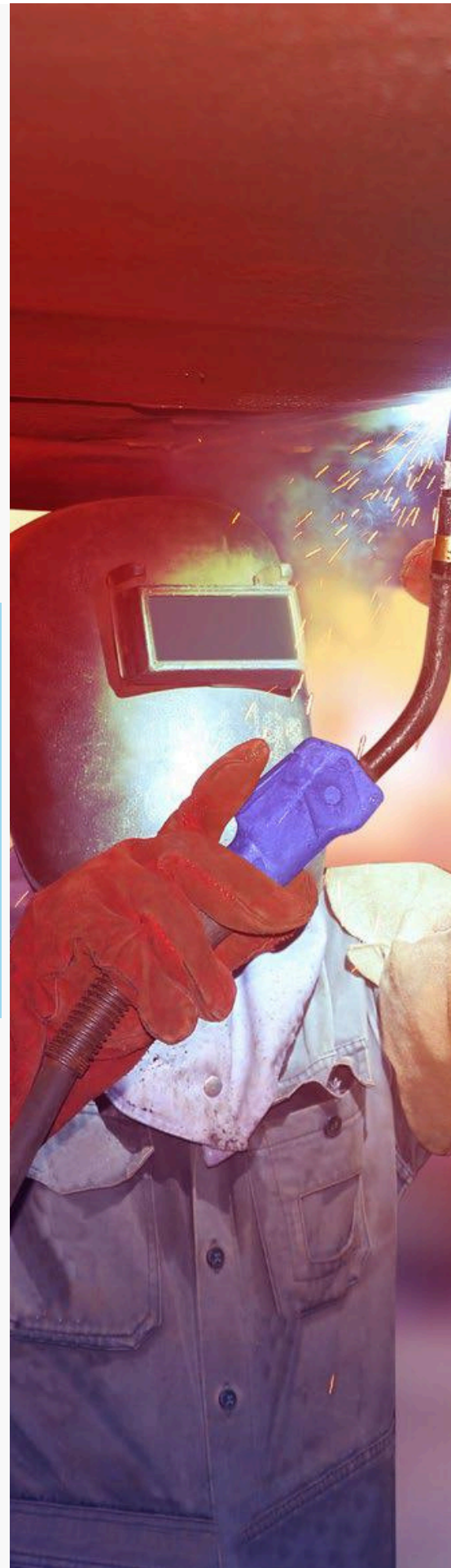
SHIPYARD FACILITIES

SHIPTECH DRYDOCKS covers an area of approximately 40,000 sq. feet. Inside Dubai Maritime City (DMC). Being an ISO 9001, ISO 14001 & ISO 45001 company, the shipbuilding & ship repair activities cover fabrication, welding, mechanical, electrical, machine shop, surface preparation, painting and afloat repairs. Full fledged, Shipbuilding and Ship repair departments having competent teams to perform respective task are as follows:

- Safety Department
- Quality Control and Quality Assurance Department
- Design and Engineering Department
- Mechanical Department (Propulsion Services, Engine Repair and General Mechanical Services)
- Electrical/Automation Department
- Machine shop
- Fabrication & Welding Department
- Hull Treatment
- Carpentry & Joinery Department
- Piping Department

Ship repair & shipbuilding are managed by Operations Manager, supported by a team of project engineers, and field supervisors.

The departments are headed by qualified and experienced professionals competent to handle challenging projects.



DUBAI MARITIME CITY FACILITIES

SHIPTECH DRYDOCKS is located at Dubai Maritime City (DMC) with state of the art facilities for Ship repair and Ship Building activities that include:

- Ship repair, Yacht manufacturing, Shipyard, workshops & warehouses, showrooms, marine parts & supplies.
- 6000 tons ship lift with 130mx45m.
- 3000 tons ship lift with 90mx35m.
- 720 tons capacity boat hoist.
- 31 dry berths of 100 m length.



THE INFRASTRUCTURE



- ✓ Yard with total 22,500 sq. feet of land for new building of Aluminum vessels as well as steel vessels
- ✓ Workshop of 20,000 sq. feet for mechanical, electrical, machine shop, carpentry and joinery equipped
- ✓ 10 tons traveling gantry crane
- ✓ Covered shed housing state of the art CNC profile cutting machine
- ✓ Warehouse for materials of 5000 sq. feet
- ✓ Labor camp for 200 employees

SHIPYARD CAPABILITIES

SHIPTECH DRYDOCKS established with a mission to provide the regions ship operators with VIP services. It has in-house engineering capability to design, build and simulate to owner's expectations and operational requirements, having effective infrastructure and production facility at Dubai Maritime City.

SHIPTECH DRYDOCKS has a large portfolio of Fast Off Shore Support vessel designs, security and aluminum vessels for the oil and gas industry.

SHIP REPAIR & CONVERSION

With modern facilities and skilled workforce, SHIPTECH DRYDOCKS is fully equipped to handle a broad range of vessel repairs and provide services to international clients within budget and meet completion deadline with high customer satisfaction.

We are committed to provide fast turn-around of repairs and will work around the clock to ensure the vessel is delivered on time with utmost quality and safety.

Types of Services

PROPULSION SERVICES

Proven record of trouble shooting and overhaul of all types of: CPP propeller, Bow-thrusters & Azimuth thrusters, in addition to the following services:

- Alignment , Calibrate and machining of stern tube bushes & renewal of all kind of Bearings & Seals.
- Propellers Repair and balancing.
- C.P.P overhauling including blades.
- Tail Shaft & Propeller Repairs for various alloys in accordance to qualified procedures.



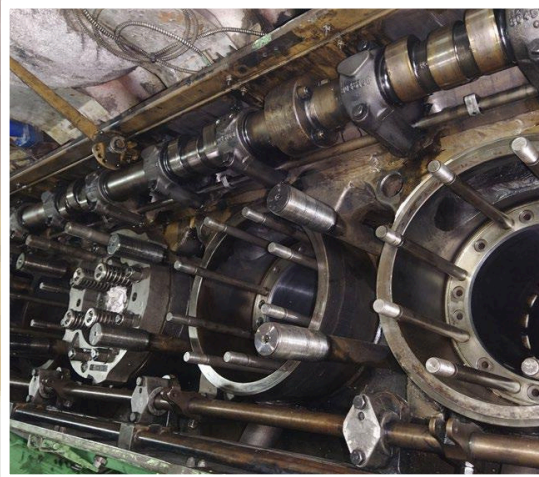
Types of Services

ENGINE REPAIR AND SERVICES

Our Engineers/technicians specialize in marine engines and can deliver fast-track, efficient on-site repair services that solve any propulsion issue.

Our engine services include:

- In-situ Partial and complete overhauling of high speed and medium speed engines.
- Troubleshooting and repairing of fuel and lubrication systems.
- Troubleshooting reconditioning and repairing of cooling systems.
- Trouble shooting and repairing of Electronic and Electrical systems



Types of Services

MECHANICAL

Our Division provides Hydraulic, Mechanical & Pneumatic service to marine, Sea Ports & petro Chemical Industry.

Overhauling, Troubleshooting, Repairing & Commissioning of Mechanical/Electro-Hydraulic systems include:

- Cargo Cranes, Hose Handling Cranes, Deck Cranes and Provision Cranes.
- Towing/anchor Handling Winches & Windlass/Mooring Winches
- Hatch-covers System & Hydraulic Grab for Bulk Carriers
- All type of Steering Systems
- All kind of Ship Valves, Pumps (Sea & Fresh Water), Cargo pumps, Repairing of Jack-up barge pneumatic cylinders (Both Single & Double Acting)

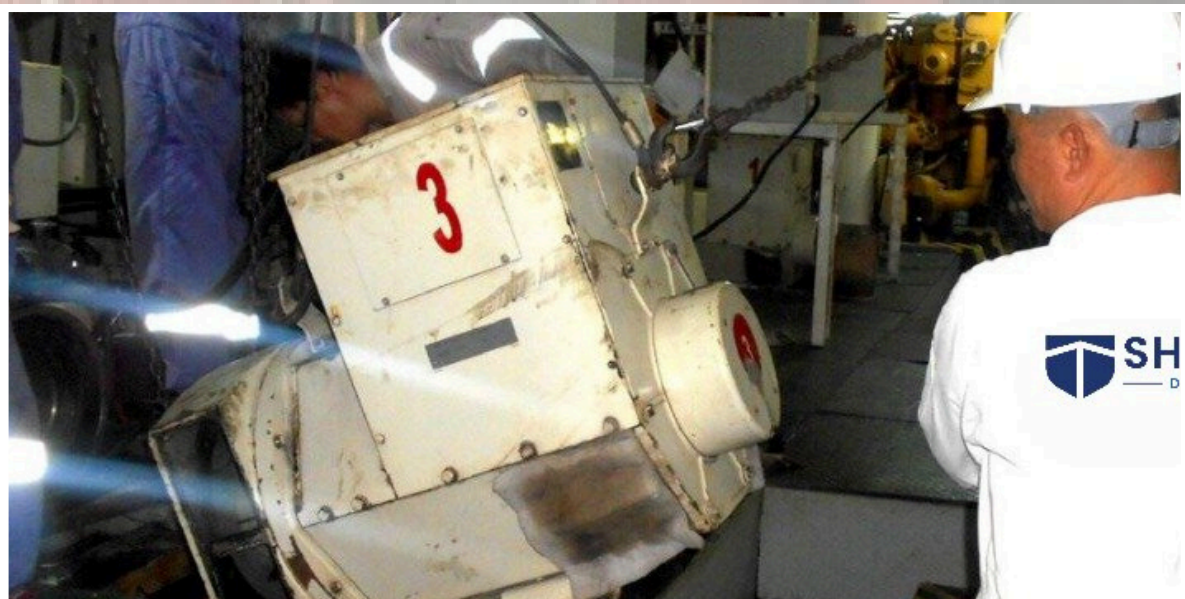


Types of Services

ELECTRICAL/AUTOMATION

Our in-house electrical department has the capability to carry out electrical installation services which include:

- Design, manufacture and repair of electrical panels of various sizes
- Engineering solutions for necessary process automation, equipment safety assurance and alarm monitoring systems
- Cable route engineering, cable running & termination in compliance with marine standards
- Rebuilding, upgrading and repairing of all console kinds
- Reconditioning/ rebuilding of electrical motors/alternators



Types of Services

MACHINING SERVICES

SHIPTECH DRYDOCKS has a proven track record for its machining services.

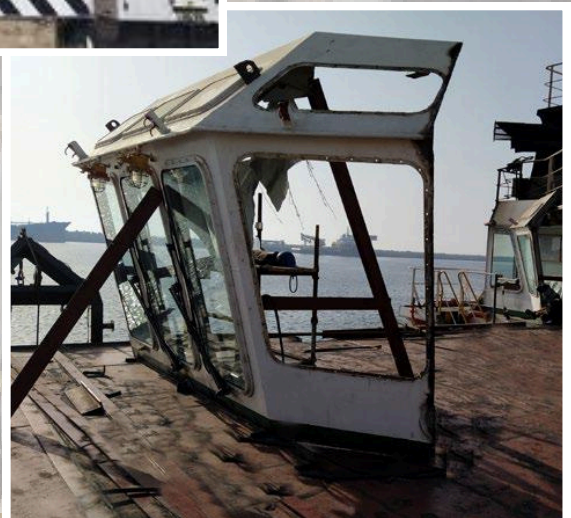
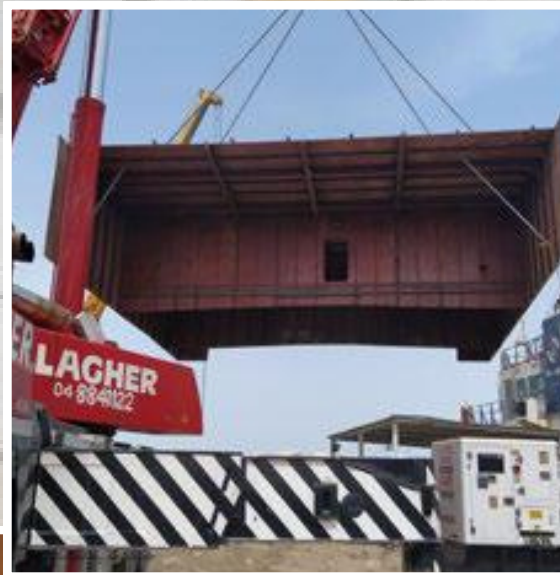
With our fully equipped machine shop together with the vast experience of our machinists and supervisors we provide our clients turnkey solutions for all their project's needs.



Types of Services

WELDING & FABRICATION

With our qualified Procedures for the complex off shore industry demands and state-of-the-art equipment and machinery, SHIPTECH DRYDOCKS Welding/fabrication division undertakes all types of Offshore & marine related custom Welding/fabrication works; which includes the highest tensile steel alloys, stainless steel, Duplex steel, CuNi alloys, and aluminum alloys.



Types of Services

PIPE FABRICATION & INSTALLATION

At SHIPTECH DRYDOCKS, our team of experienced fitters can perform customized piping fabrication and installation projects as per our client needs and requirements; which include carbon steel, stainless steel, copper nickel, aluminum with the highest quality and standards.



Types of Services

HULL TREATMENT

With our qualified Procedures for the complex off shore industry demands and state-of-the-art equipment and machinery, SHIPTECH DRYDOCKS Welding/fabrication division undertakes all types of Off shore & marine related custom Welding/fabrication works; which includes the highest tensile steel alloys, stainless steel, Duplex steel, CuNi alloys, and aluminum alloys.



Types of Services

JOINERY WORKS

SHIPTECH DRYDOCKS has expertise to supply and install all architectural works related to interiors of marine vessels and offshore platforms. Our extensive capacity is available to fabricate wooden, aluminum honeycomb furniture in-house with state-of-the-art equipment along with team of highly skilled carpenters.

Our Scope of Works includes supply and installation of:

- Wall panels – hardcore/softcore (B0, B15, A60, H120)
- Ceiling panels (B0, B15)
- Toilet modules
- Raised floor and A60 floating floor
- Window-bolted and welded type – A0, A60, H120 etc.
- Marine class rated doors – B15, A0, A60 single and double leaf, H60, H120 etc.
- Freezer and chiller room panels, Galley Stainless Steel panels, ceiling and cabinets
- SHIPTECH DRYDOCKS also specializes in the fabrication and installation of wheelhouse console and drillers cabin.- Marine class rated doors – B15, A0, A60 single and double leaf, H60, H120 etc.



ALUMINUM SHIPBUILDING

Aluminum Shipbuilding is one of the major competency of SHIPTECH DRYDOCKS Shipyard, having the unique experience and the right knowledge positioned as a unique builder of Fast off shore support vessels.

The company's workforce is highly skilled and productive and is focused on achieving high customer satisfaction by delivering quality product, with an optimized operational envelop at competitive price.

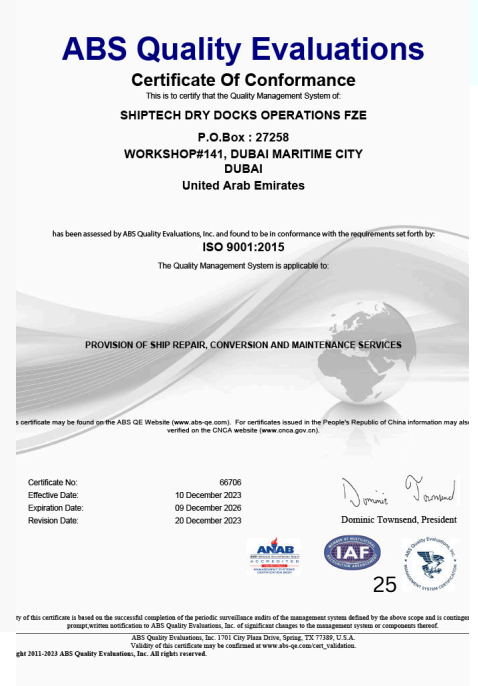
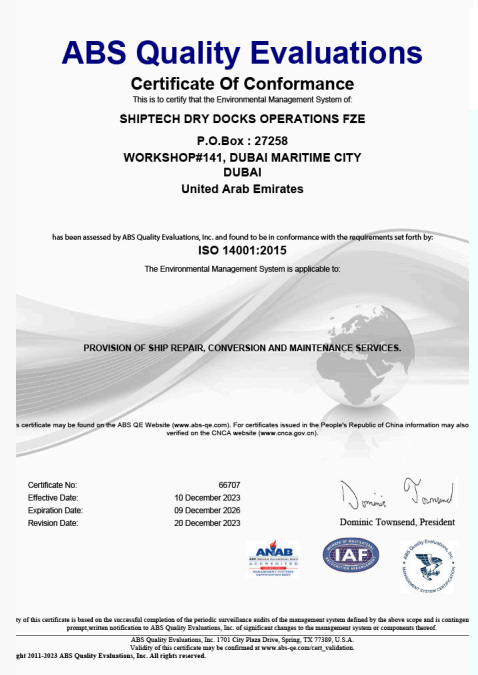
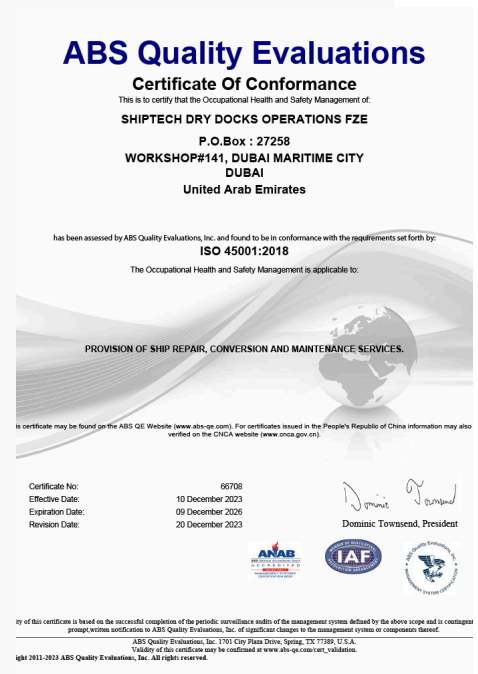
QUALITY ASSURANCE POLICIES

We at SHIPTECH DRYDOCKS are firmly committed to be one of the best Shipbuilding & Ship Repair Service providers.

Deliver innovative high-Quality product and services to our Customers by meeting & exceeding their requirement & expectations, with timely delivery caring the environment in and around us. We are committed to protect the environment and prevent it from all types of pollution due to our activities, products & services.

As part of the UAE business community we are committed to abide all applicable laws & regulations. As a committed company for managing QEMS effectively as per ISO 9001, & ISO 14001 & iso 45001, ABS certificate.

we pledge to continually improve its effectiveness, through our highly trained, experienced people with their committed involvement. Hence, they all are made aware of this policy. This policy is communicated to public & periodically reviewed.





SHIPTECH

— D R Y D O C K S —



Tel: +971 4 446 7956
bd@shiptechdrydocks.com
P.O. Box 27258, Dubai Maritime City
Dubai, United Arab Emirates
www.shiptechdrydocks.com